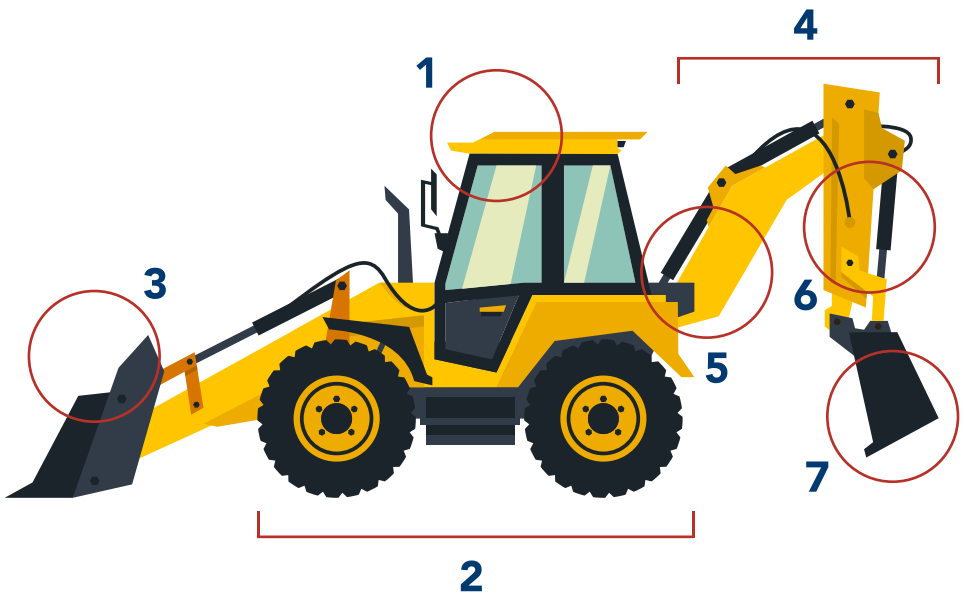




BACKHOE PARTS & THEIR FUNCTIONS

Each component of the backhoe loader serves a specific function. What makes a backhoe loader so versatile and valuable is that you can use the backhoe to dig and then use the front loader to transport the material. Let's begin with going over the four main backhoe parts and their functions, followed by a breakdown of backhoe parts.

BACKHOE: PARTS & FUNCTIONS



1. CAB

The cab, located on top of the tractor, is where you find the controls for the front loader and backhoe. Some cabs are completely enclosed by safety glass, while others use an open canopy structure to protect the operator. Inside the cab, an operator can monitor their entire surroundings from a safe position. The chair inside the cab can rotate, allowing you to switch from using the front loader to the backhoe easily.

2. TRACTOR

Without the tractor, a backhoe loader would have a difficult time maneuvering in terrain. The tractor consists of large tires, a cab, and a powerful engine. The main function of the tractor is to get the machine around the construction site. Once in position, the operator will park the tractor before using the backhoe or loader.

3. FRONT LOADER

Whether you're moving earth, pushing snow, or picking up debris and materials, you'll use the backhoe's front loader. A front loader is mainly just the large bucket used to move and transport materials from one spot to another. You might also find operators using the front loader to smooth out surfaces as well.

4. BACKHOE

The backhoe excavates or lifts heavy materials. The backhoe portion of the machine consists of three main components: the boom, the bucket, and the dipstick. In order to use the backhoe, you must first park the tractor in a stable position using stabilizer legs. Then you can use the backhoe to dig up trenches, holes, small ponds, or similar applications.

5. THE BOOM

Located closest to the cab, the boom is the long piece of the backhoe arm attached to the tractor. The boom can lift, lower, or swing left and right. An operator controls the motion of the boom from the safety of the cabin.

6. DIPPER ARM

The other main part of a backhoe arm is the dipstick. The dipstick runs from the pivot to the bucket located at the end of the backhoe arm. The dipstick stabilizes the weight of the materials inside the bucket.

7. BUCKET

Located at the end of the backhoe arm, the bucket scoops and transports debris and other materials. When you want to scoop dirt into the bucket, keeping the bottom of the bucket horizontal retract the dipper arm. To empty the bucket, you move the bucket away from the dipstick.